



# HEALTHCARE SOLUTIONS



# HEALTHCARE SOLUTIONS AT ALL LEVEL



**Staff and Patient ID Tracking**



**Healthcare Material Management**



**Point of care**



**Laboratory**

TSC Auto ID has solutions for the healthcare sector at all levels. Both our printers and genuine supplies are optimised for use in healthcare, be it mobile, desktop or industrial applications. On the following pages we are pleased to present our printers specially developed for your daily support.

TSC Auto ID barcode printers are designed to integrate seamlessly into our customers' existing systems without the need for changes to existing infrastructure or processes. This „hassle-free replacement“ helps to streamline processes, reduce errors and improve overall effectiveness and quality. Our customers tell us that TSC



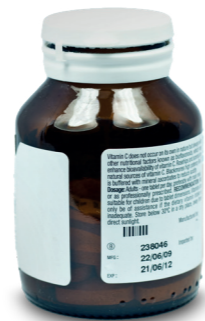
**Pharmacy**

Auto ID not only matches or exceeds the quality of other international brand manufacturers, but more importantly that our products are highly firmware compatible. Switching from another brand to TSC Auto ID requires only minimal adjustments.

Our many years of experience in all vertical market applications, flexible customised services and the reliability of our products together form the core of TSC Auto ID's competitiveness and success. We do everything it takes to fulfill our brand promise every day with our smart products and excellent customer service.



**Medical Equipment Labelling**



## GENUINE SUPPLIES

With product experts that can guide you through all stages of your consumables application, you can be assured that your supplies will be optimized in form, fit and function.\*

\*Supplies offer vary by region



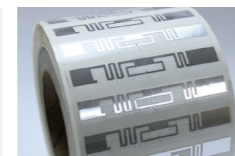
**Thermal Printing Solutions**



**Wristbands**



**Linerless Labels**



**UHF RFID Labels**



**Custom Labels**



**Cleaning Supplies**

**Our product expertise runs deep and our supplies knowledge base is comprehensive.**

## ALPHA-30LHC MOBILE BARCODE PRINTER FOR HEALTHCARE Intelligent Label Printing



### KEY FEATURES

#### Sophisticated TSC Sense Care

- Auto scans and detects unhealthy printhead dots during printing
- Monitors smart battery to ensure full shift productivity, reduce total cost of ownership and avoid downtime

#### Seamless Mobility Communication

- MFi Bluetooth® 5.0 with NFC tap-to-pair setup enables easy connectivity
- Dual band Wi-Fi with fast roaming and enterprise-

Model	Resolution	Max. Print Width	Max. Print Length	Max. Print Speed	Dimensions (W x H x D)	Weight
ALPHA-30LHC	203 DPI	2.83"	110"	5 ips	117mm x 173mm x 79mm 4.61" x 6.81" x 3.11"	745 g

grade security ensures reliable and safe operation

from 1.0m

#### Integrated Software Pack

- Supports label printing applications for different platforms
- TSC mobile printing app is available for both iOS and Android™ users

#### Dynamic Remote Printer Management

- SOTI Connect and TSC Console support multiple management tasks, reduce maintenance costs and avoid downtime of business-critical devices

#### Industry-Specific Durability Standards

- IP54 rating for dust and water resistance
- Rugged design for drops from 1.8m and tumbles

#### Full Line of Accessories

- Assist in performing diverse labeling tasks including hands-free mobility

## TH DH SERIES DESKTOP BARCODE PRINTER FOR HEALTHCARE The Handy Way to Conquer Label Printing Challenges



DH 220/320 HTC



DH 240/340 HTC



TH 220/320 HTC



TH 240/340 HTC

Model	Resolution	Max. Print Width	Max. Print Length	Max. Print Speed	Dimensions (W x H x D)	Weight
TH220THC	203 DPI	2.13"	1,000"	8 ips	146 mm x 179 mm x 231 mm 5.75" x 7.05" x 9.09"	1.8 kg
TH320THC	300 DPI	2.24"	450"	6 ips		
DH220THC	203 DPI	2.13"	1,000"	8 ips	138 mm x 172 mm x 210 mm 5.43" x 6.77" x 8.27"	1.6 kg
DH320THC	300 DPI	2.24"	450"	6 ips		
TH240THC	203 DPI	4.25"	1,000"	8 ips	223mm x 186mm x 286 mm 8.78" x 7.32" x 11.26"	2.8 kg
TH340THC	300 DPI	4.16"	450"	6 ips		
DH240THC	203 DPI	4.25"	1,000"	8 ips	208 mm x 170 mm x 235 mm 8.19" x 6.69" x 9.25"	2.1 kg
DH340THC	300 DPI	4.16"	450"	6 ips		

### KEY FEATURES

#### Seamless Integration, Effortless Deployment

- Out-of-the-box auto-switch print language emulation
- User-friendly and convenient label printing with TSC Standalone Creator and TSCPRTGo

#### Minimising Downtime, Maximising Uptime

- Real-time remote printer monitoring and management with the Internal Embedded Webpage, virtual control panel, TSC Console, and SOTI Connect
- Downtime prevention with self-diagnostic TPH Care, TPH (thermal printhead) maintenance, and ribbon low warning
- User-friendly design: self-diagnostics, toolless TPH and platen roller replacement for easy maintenance, and shortcut buttons for enhanced efficiency

- Supports network security configurations: HTTPS, SNMPv3, 802.1X, and TCP/IP Port 9100 filter

#### Versatile, Future-Proof Print Quality

- 15mm to 120mm wide media width for diverse media types, optional narrow media adaptors support the narrow label width to 10mm
- High-precision print quality with innovative label stabilising media damper and adjustments in vertical DPI, heater line, and TPH pressure
- Supports UTF-8 TTF (TrueType Font) for different language label content printing
- Addable future-proof upgrades: Wi-Fi, Bluetooth, cutter module, peeler module, care label cutter kit, linerless tear-off kit, and linerless cutter kit

#### Environmentally Sustainable Printer

- 100% recyclable packaging with FSC-compliant cartons
- 100% recyclable plastic printer casing made with 30% recycled plastic
- 90%+ of printer components are recyclable

#### Healthcare Tailored Design

- Crisp white and bright full-color scheme, perfectly suited for healthcare environments
- Antimicrobial, easy-to-disinfect casing for effortless cleaning, vastly reducing the risk of contamination
- IEC 60601-1 Medical-Grade Compliant Power Supply, ensuring safe and reliable use in healthcare facilities

**THINK SUSTAINABILITY**  
REDUCE - REUSE - RECYCLE





#### **CORPORATE HEADQUARTERS**

TSC Auto ID Technology Co., Ltd.  
Tel: +886 2 2218 6789  
E-mail: [apac\\_sales@tscprinters.com](mailto:apac_sales@tscprinters.com)

#### **LI ZE PLANT**

TSC Auto ID Technology Co., Ltd.  
Tel: +886 3 990 6677  
E-mail: [apac\\_sales@tscprinters.com](mailto:apac_sales@tscprinters.com)

#### **CHINA**

Tianjin TSC Auto ID Technology Co., Ltd.  
Tel: +86 22 5981 6661  
E-mail: [apac\\_sales@tscprinters.com](mailto:apac_sales@tscprinters.com)

#### **ASIA PACIFIC**

TSC Auto ID Technology Co., Ltd.  
Tel: +886 2 2218 6789  
E-mail: [apac\\_sales@tscprinters.com](mailto:apac_sales@tscprinters.com)

#### **KOREA**

TSC Korea Representative Office  
Tel: +82 2 852 3322  
E-mail: [apac\\_sales@tscprinters.com](mailto:apac_sales@tscprinters.com)

#### **INDIA**

TSC India Representative Office  
Tel: +91 2249 679 315  
E-mail: [apac\\_sales@tscprinters.com](mailto:apac_sales@tscprinters.com)

#### **EMEA**

TSC Auto ID Technology EMEA GmbH  
Tel: +49 (0) 8106 37979 000  
E-mail: [emea\\_sales@tscprinters.com](mailto:emea_sales@tscprinters.com)

#### **MIDDLE EAST**

TSC Auto ID Technology ME Ltd, FZE  
Tel: +971 4 2533 069  
E-mail: [emea\\_sales@tscprinters.com](mailto:emea_sales@tscprinters.com)

#### **RUSSIA**

TSC Auto ID Technology EMEA GmbH  
Tel: +7 495 646 3538  
E-mail: [emea\\_sales@tscprinters.com](mailto:emea_sales@tscprinters.com)

#### **AMERICAS**

TSC Auto ID Technology America Inc.  
Tel: +1 657 258 0808  
E-mail: [americas\\_sales@tscprinters.com](mailto:americas_sales@tscprinters.com)

#### **MEXICO**

TSC Mexico Representative Office  
Tel: +1 52 (33) 3673 1406  
E-mail: [americas\\_sales@tscprinters.com](mailto:americas_sales@tscprinters.com)

#### **BRAZIL**

TSC Brazil Representative Office  
Tel: +55 (11) 3554 7225  
E-mail: [americas\\_sales@tscprinters.com](mailto:americas_sales@tscprinters.com)

All features and specifications are subject to change without notice.

©2024 TSC Auto ID Technology Co., Ltd. All Rights Reserved. **TSC Auto ID** [tscprinters.com](http://tscprinters.com)

20240316