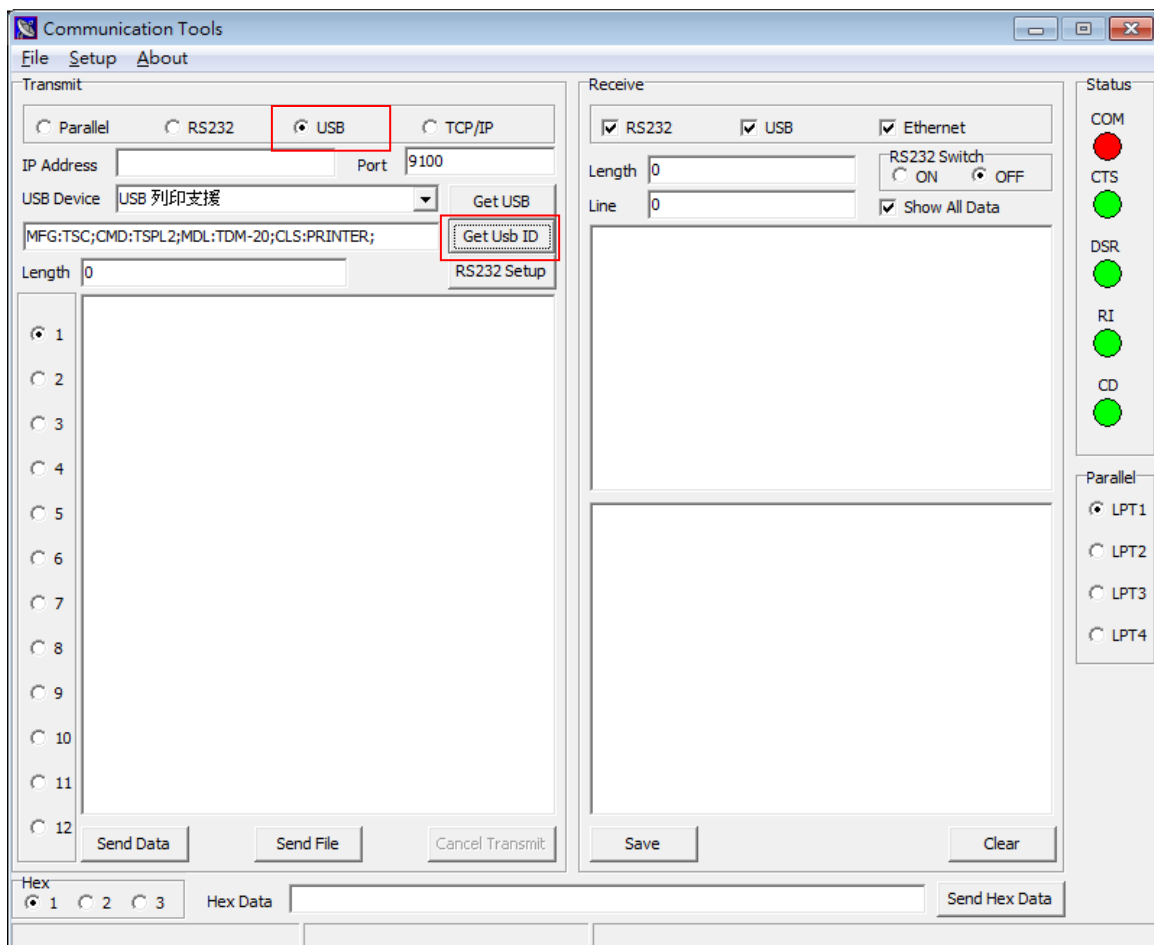


## How to get BT MAC address with Communication Tool 如何使用 Communication Tool 回傳 BT 位址

1. Execute Communication Tool. Select the "USB" then press "Get Usb ID" button to get the printer USB ID.

開啟 "Communication Tool" 工具, 選取"USB"後按下"Get Usb ID"按鈕以取得印表機 USB ID



2. Key in `OUT GETSETTING$("CONFIG","BT","MAC ADDRESS")` then press "Send Data" button and BT MAC address will be returned.

於對話框中輸入 `OUT GETSETTING$("CONFIG","BT","MAC ADDRESS")`, 按下 "Send Data" 按鈕, 即回傳 BT MAC 位址



# TSC Auto ID Technology Co., Ltd.

**Corporate Headquarters**  
9F., No.95, Minquan Rd., Xindian Dist.,  
New Taipei City 23141, Taiwan  
TEL: +886-2-2218-6789 FAX: +886-2-2218-5678  
Web site: www.tscprinters.com

**Li Ze Plant**  
No.35, Sec. 2, Ligong 1st Rd., Wuji Township,  
Yilan County 26841, Taiwan  
TEL: +886-3-9906677 FAX: +886-3-9905577

